

# CITY OF PASO ROBLES

Drought Response: Feb. 21, 2017 Update



**Reduce Your Use!**

[www.PasoWater.com](http://www.PasoWater.com)

# Drought Response: 2017 Update

## Conservation Outlook

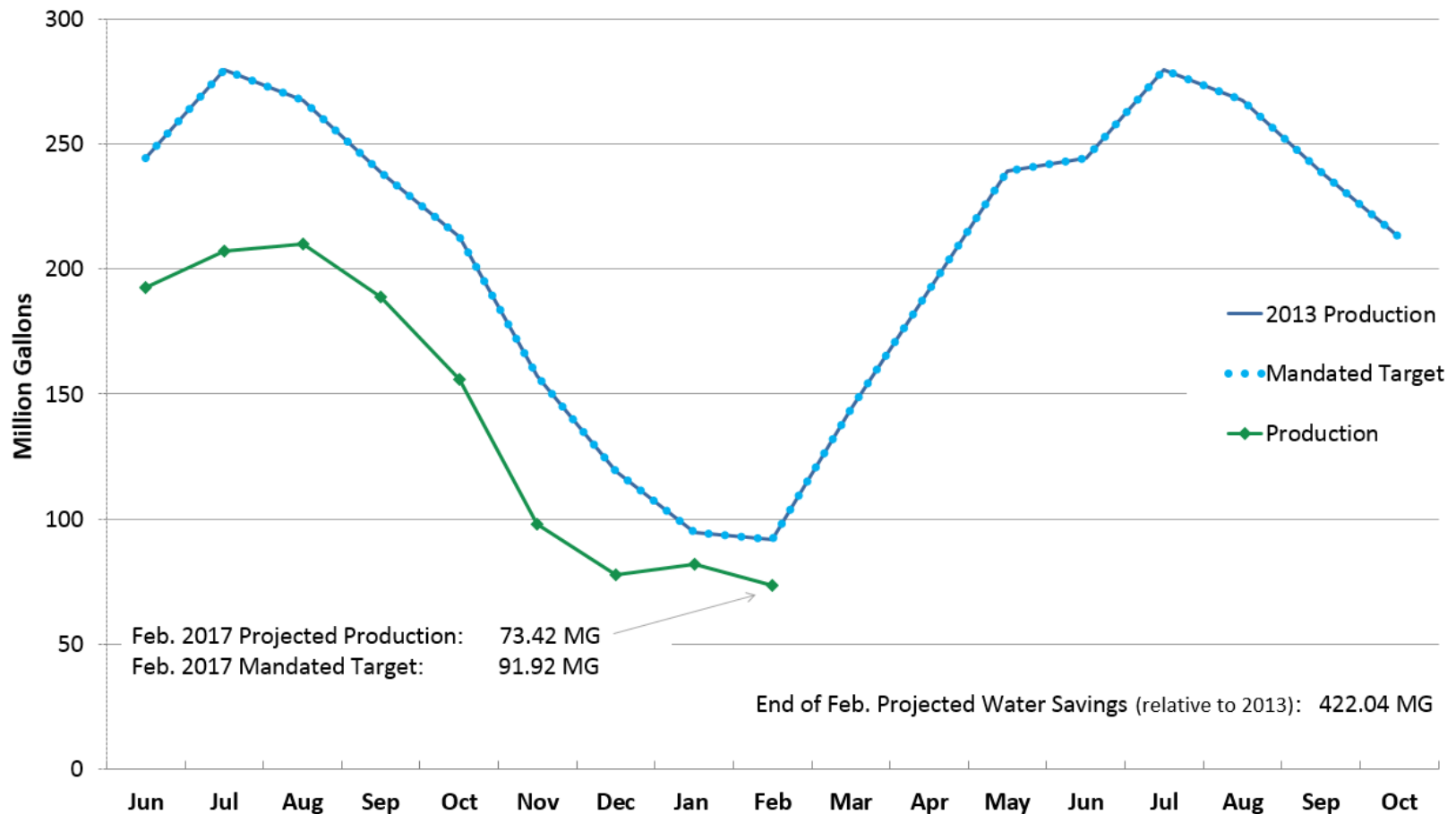
- February water use projected to be below mandated target
- City water conservation rebates are still available

## Conservation Regulations

- State's has extended mandatory conservation regulations through October 2017
- City's existing conservation targets remain in effect
- State will reassess need for mandatory conservation after wet season

# Drought Response: 2017 Update

Production and Mandated Conservation Target (Jun 2016 - Oct 2017)



# Drought Response: 2017 Update

## Nacimiento Water Supply

<b>Nacimiento</b>	<b>Saturday</b>	<b>Sunday</b>	<b>Monday</b>	<b>Tuesday</b>
<b>Date</b>	<b>2/18</b>	<b>2/19</b>	<b>2/20</b>	<b>2/21</b>
Percentage of Capacity (%)	89	91	92	97
Elevation (feet)	792.3	794	794.25	797.7
Depth (feet)	177.3	179	179.25	182.7
Storage (acre-feet)	335305	344450	345800	364805
Lake Surface Area (acres)	5353	5435	5447	5614
Length of Lake (miles)	17.8	18	18	18.4
Releases (cfs)	643	2090	4230	6130
Rainfall Past 24 Hours (in.)	1.78	0.11	0	0.66
Rainfall Total to Date (in.)	16.75	16.86	16.86	17.52
Total Rain to Date Last Year (in.)	6.64	6.64	6.64	6.64
Total Rain Last Season (in.)	9.44	9.44	9.44	9.44